

WHERE  
LIFE EXTENDS  
BEYOND  
YOUR HOME



ALTOSA  
**AMPLE**  
YOU DESERVE AMPLE



ALTOSA  
**UTSAV**  
CELEBRATE LIFE

2 & 3 BHK FLATS & SHOPS

મવડીમાં 10225 વારના  
**LARGEST સર્કલ પર**



**ALTOSA  
AMPLE**

YOU DESERVE AMPLE

**3 BHK FLATS  
& SHOPS**



**ALTOSA  
UTSAV**

CELEBRATE LIFE

**2 BHK FLATS  
& SHOPS**



ELEGANTLY  
PLANNED  
& EFFICIENTLY  
PERFECT

At Altosa Ample & Altosa Utsav, life extends well beyond the home as the outdoors now becomes an integral part of how dynamic family life can be.

A unique mix of 2 BHK and 3 BHK apartments ensures you find the perfect fit for your lifestyle. Spacious apartments open out to sweeping views of Mavdi's largest circle. Altosa Ample & Altosa Utsav comprise 96 3 BHK & 137 2 BHK residential flats that complement your lifestyle with modern amenities.

With Altosa Ample & Altosa Utsav's retail block within the property, you can nurture your entrepreneurial aspirations while staying near home.

A PLACE FOR  
EVERYTHING  
& EVERYTHING  
IN ITS PLACE



THE FINEST  
LIFESTYLE FOR  
YOU AND  
YOUR FAMILY

## મણીમાં 10225 વારના LARGEST સર્કલ પર

A place that enables you to live life to the fullest. An enviable address with all the comforts and essentials of an urban life style.

Altosa Ample & Altosa Utsav have been designed with an eye on tomorrow. A home for the future, one that meets modern standards of building. Beauty, comfort and efficiency come together perfectly.



## BASEMENT LAYOUT



## GROUND FLOOR PLAN



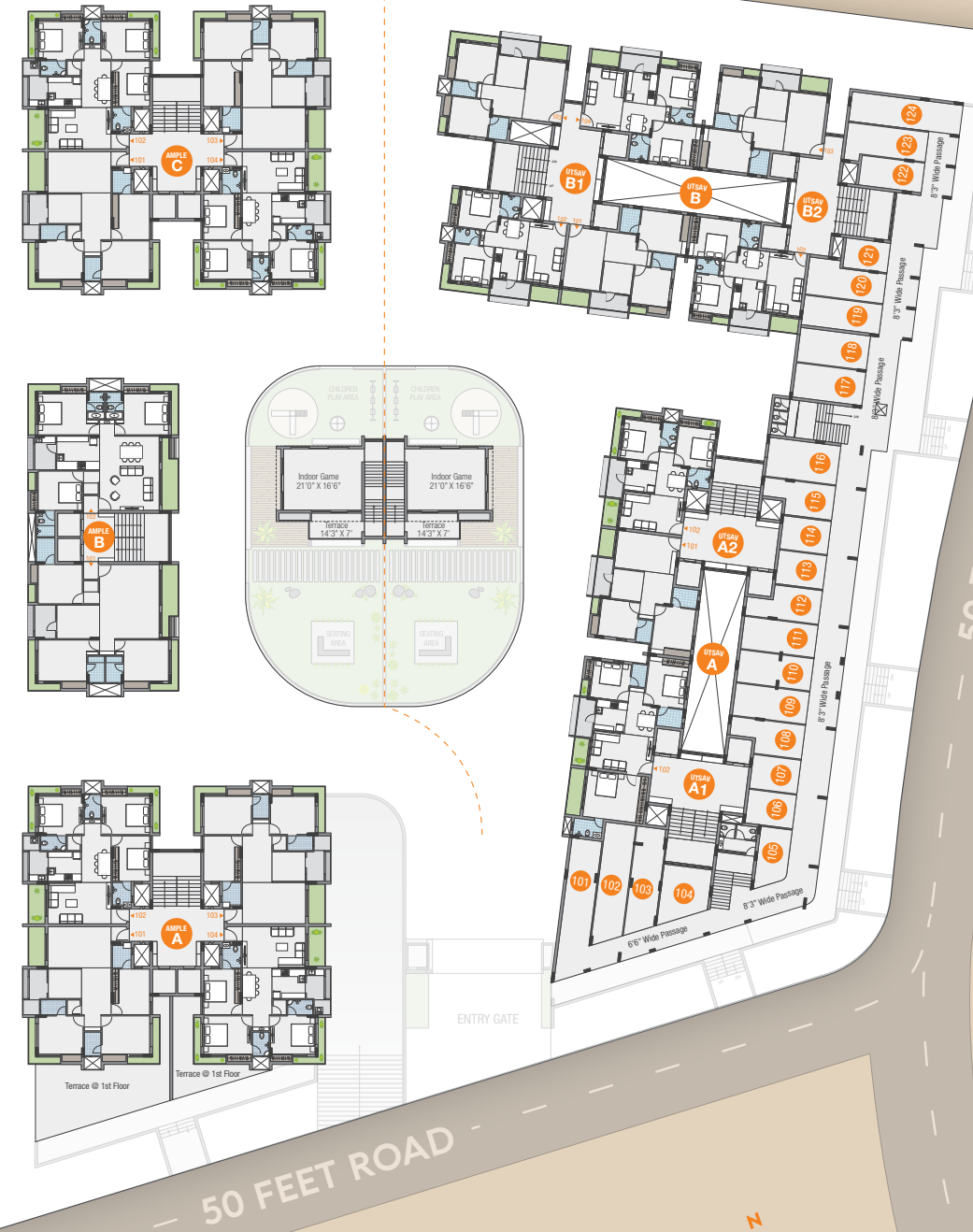
### ALTOSA AMPLE SHOPS ON GROUND FLOOR

| SHOP NO.  | SIZE          | SQ. FT. |
|-----------|---------------|---------|
| AMPLE 001 | 9'3" X 34'6"  | 319     |
| AMPLE 002 | 10'0" X 42'0" | 420     |
| AMPLE 003 | 8'9" X 38'9"  | 352     |
| AMPLE 004 | 8'1" X 29'0"  | 233     |
| AMPLE 005 | 8'1" X 26'5"  | 213     |
| AMPLE 006 | 8'9" X 31'0"  | 283     |
| AMPLE 007 | 10'0" X 28'0" | 283     |
| AMPLE 008 | 9'3" X 25'0"  | 230     |

### ALTOSA UTSAV SHOPS ON GROUND FLOOR

| SHOP NO.  | SIZE          | SQ. FT. |
|-----------|---------------|---------|
| UTSAV 001 | 8'1" X 37'3"  | 305     |
| UTSAV 002 | 8'1" X 33'6"  | 275     |
| UTSAV 003 | 8'1" X 29'9"  | 237     |
| UTSAV 004 | 13'0" X 20'9" | 275     |
| UTSAV 005 | 16'8" X 16'8" | 214     |
| UTSAV 006 | 9'1" X 16'8"  | 152     |
| UTSAV 007 | 9'1" X 21'1"  | 192     |
| UTSAV 008 | 9'1" X 21'1"  | 192     |
| UTSAV 009 | 9'1" X 28'1"  | 227     |
| UTSAV 010 | 8'9" X 28'1"  | 244     |
| UTSAV 011 | 8'9" X 28'1"  | 244     |
| UTSAV 012 | 8'9" X 28'1"  | 244     |
| UTSAV 013 | 9'1" X 28'1"  | 227     |
| UTSAV 014 | 9'1" X 21'1"  | 192     |
| UTSAV 015 | 9'0" X 21'1"  | 190     |
| UTSAV 016 | 9'3" X 27'5"  | 230     |
| UTSAV 017 | 10'6" X 27'5" | 288     |
| UTSAV 018 | 9'3" X 27'5"  | 253     |
| UTSAV 019 | 9'3" X 27'5"  | 253     |
| UTSAV 020 | 8'0" X 29'11" | 239     |
| UTSAV 021 | 8'0" X 24'2"  | 199     |
| UTSAV 022 | 8'0" X 20'10" | 167     |
| UTSAV 023 | 13'2" X 12'4" | 163     |
| UTSAV 024 | 8'0" X 25'2"  | 201     |
| UTSAV 025 | 8'0" X 29'11" | 247     |
| UTSAV 026 | 8'0" X 29'11" | 239     |

## FIRST FLOOR PLAN



### ALTOSA AMPLE NO SHOPS ON FIRST FLOOR

#### FLATS WITH OPEN TERRACE

FLAT A-101 - 600 SQ. FT.

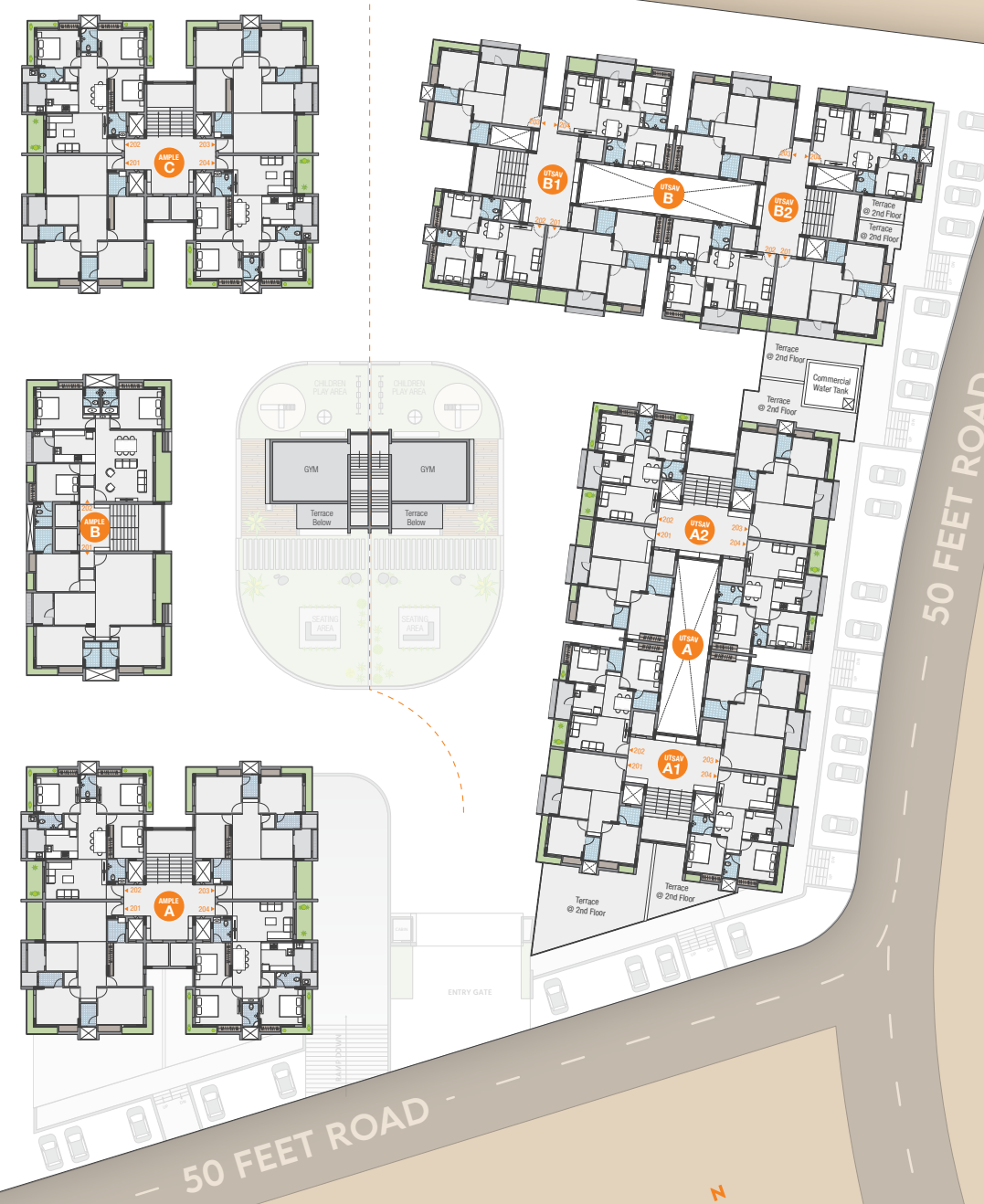
FLAT A-104 - 250 SQ. FT.

### ALTOSA UTSAV SHOPS ON FIRST FLOOR

| SHOP NO.  | SIZE          | SQ. FT. |
|-----------|---------------|---------|
| UTSAV 101 | 8'1" X 37'3"  | 305     |
| UTSAV 102 | 8'1" X 31'8"  | 259     |
| UTSAV 103 | 8'1" X 28'0"  | 225     |
| UTSAV 104 | 13'0" X 13'9" | 181     |
| UTSAV 105 | 17'0" X 8'5"  | 129     |
| UTSAV 106 | 9'1" X 12'10" | 118     |
| UTSAV 107 | 9'1" X 12'10" | 118     |
| UTSAV 108 | 9'1" X 19'10" | 152     |
| UTSAV 109 | 8'9" X 19'10" | 173     |
| UTSAV 110 | 8'9" X 19'10" | 173     |
| UTSAV 111 | 8'9" X 19'10" | 173     |
| UTSAV 112 | 9'1" X 19'10" | 152     |
| UTSAV 113 | 9'1" X 12'9"  | 118     |
| UTSAV 114 | 9'0" X 12'9"  | 116     |
| UTSAV 115 | 9'3" X 19'2"  | 154     |
| UTSAV 116 | 10'6" X 19'2" | 202     |
| UTSAV 117 | 9'3" X 18'9"  | 177     |
| UTSAV 118 | 9'3" X 18'9"  | 177     |
| UTSAV 119 | 8'0" X 21'0"  | 168     |
| UTSAV 120 | 8'0" X 21'0"  | 184     |
| UTSAV 121 | 8'0" X 12'0"  | 095     |
| UTSAV 122 | 8'0" X 16'11" | 136     |
| UTSAV 123 | 8'0" X 21'8"  | 182     |
| UTSAV 124 | 8'0" X 29'11" | 239     |

\*ALTOSA UTSAV'S FLAT A/A1-102 IS  
3BHK (999 SQ. FT.)

## SECOND FLOOR PLAN



### ALTOSA AMPLE NO FLATS WITH OPEN TERRACE

### ALTOSA UTSAV FLATS WITH OPEN TERRACE

- FLAT A/A1-201 - 609 SQ. FT.
- FLAT A/A1-204 - 235 SQ. FT.
- FLAT A/A2-203 - 280 SQ. FT.
- FLAT B/B2-201 - 305 SQ. FT.
- FLAT B/B2-204 - 075 SQ. FT.

WHERE  
LAVISH LIVING  
DEFINES A  
PERFECT LIFE



## ALTOSA AMPLE

| TOWER                                  | A            | B            | C            |
|--|--------------|--------------|--------------|
| CARPET AREA<br>(APPROX. USABLE CARPET) | 1090 SQ. FT. | 1258 SQ. FT. | 1090 SQ. FT. |

### TOWER A (G+9)

| GROUND FLOOR |             | 1 TO 9 FLOOR |             |
|--------------|-------------|--------------|-------------|
| TOTAL FLATS  | TOTAL SHOPS | TOTAL FLATS  | TOTAL SHOPS |
| -            | 8           | 4X9 = 36     | -           |

### TOWER B (G+10)

| GROUND FLOOR |             | 1 TO 9 FLOOR |             |
|--------------|-------------|--------------|-------------|
| TOTAL FLATS  | TOTAL SHOPS | TOTAL FLATS  | TOTAL SHOPS |
| -            | -           | 2X10 = 20    | -           |

### TOWER C (G+10)

| GROUND FLOOR |             | 1 TO 9 FLOOR |             |
|--------------|-------------|--------------|-------------|
| TOTAL FLATS  | TOTAL SHOPS | TOTAL FLATS  | TOTAL SHOPS |
| -            | -           | 4X10 = 40    | -           |

- \*OPEN TERRACE @ FLAT A-101 - 600 SQ. FT.
- \*OPEN TERRACE @ FLAT A-104 - 250 SQ. FT.

## ALTOSA UTSAV

| TOWER                                  | A                 | B                 |
|--|-------------------|-------------------|
| CARPET AREA<br>(APPROX. USABLE CARPET) | 710 & 727 SQ. FT. | 710 & 727 SQ. FT. |

### TOWER A & B (G+9)

| GROUND FLOOR |             | 1 TO 9 FLOOR |             |
|--------------|-------------|--------------|-------------|
| TOTAL FLATS  | TOTAL SHOPS | TOTAL FLATS  | TOTAL SHOPS |
| -            | 26          | 137          | 24          |

- \*FLAT A/A1-102 IS 3BHK (999 SQ. FT.)

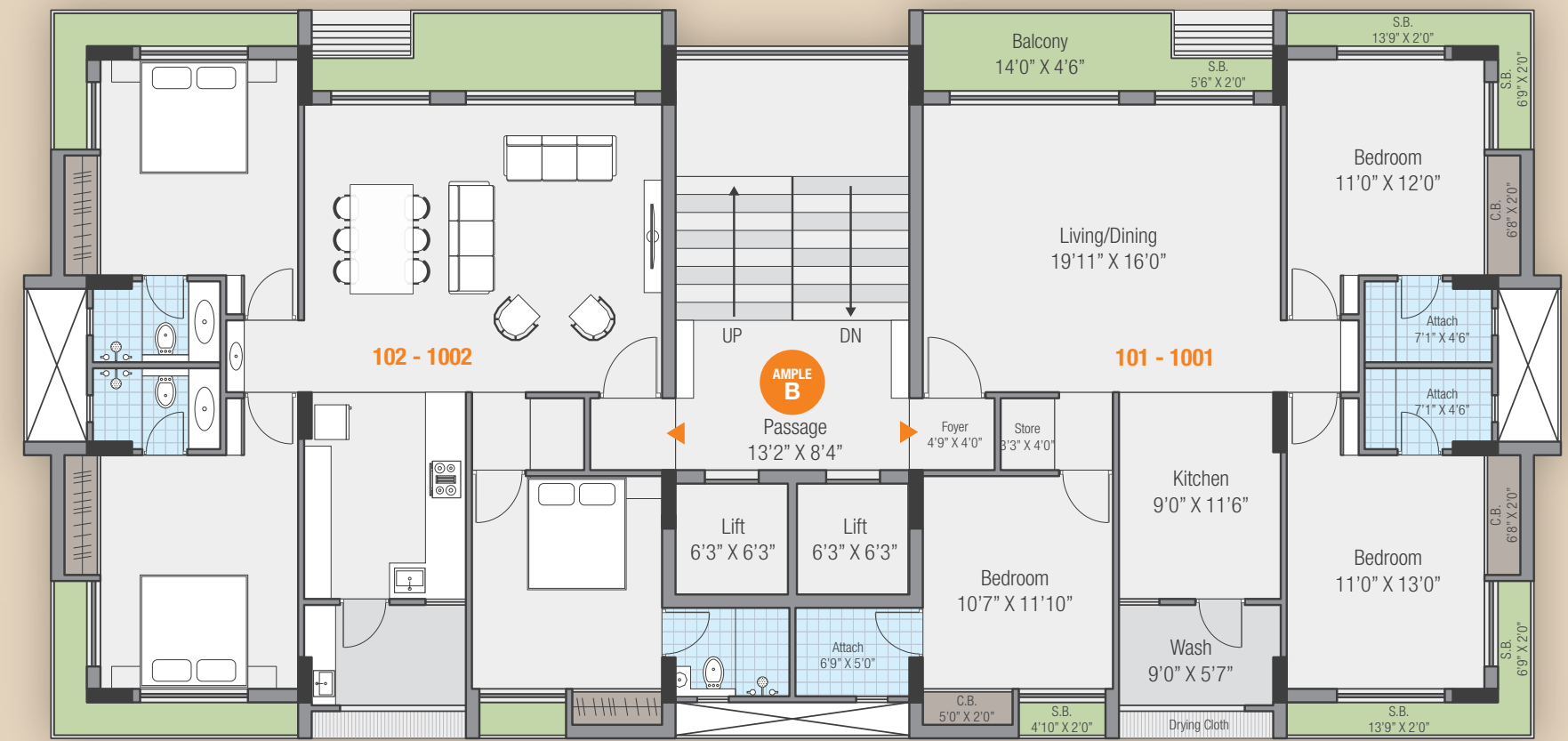
- \*OPEN TERRACE @ FLAT A/A1-201 - 609 SQ. FT.
- \*OPEN TERRACE @ FLAT A/A1-204 - 235 SQ. FT.
- \*OPEN TERRACE @ FLAT A/A2-203 - 280 SQ. FT.
- \*OPEN TERRACE @ FLAT B/B2-201 - 305 SQ. FT.
- \*OPEN TERRACE @ FLAT B/B2-204 - 075 SQ. FT.

ALTOSA AMPLE  
TOWER A & C

3 BHK FLATS  
1090 SQ. FT.  
(APPROX. USABLE CARPET)

ALTOSA AMPLE  
TOWER B

3 BHK FLATS  
1258 SQ. FT.  
(APPROX. USABLE CARPET)





ALTOSA UTSAV  
TOWER A

2 BHK FLATS  
710 & 727 SQ. FT.  
(APPROX. USABLE CARPET)





**ALTOSA UTSAV  
TOWER B**

**2 BHK FLATS  
710 & 727 SQ. FT.  
(APPROX. USABLE CARPET)**





## AMENITIES & FACILITIES



MULTI PURPOSE HALL



INDOOR GAME ZONE



WELL-EQUIPPED GYM



CHILDREN PLAY AREA



OUTDOOR SEATING



ESTATE OFFICE



AUTO DOOR LIFTS



POWER BACKUP FOR COMMON AREAS



CCTV SURVEILLANCE



FIRE SAFETY SYSTEM



GRAND ENTRANCE WITH BOOM BARRIER\*

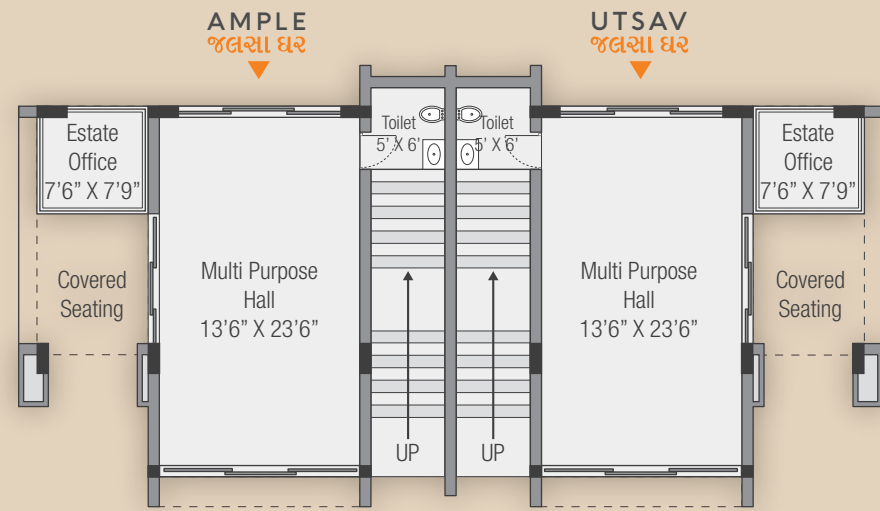


SECURITY CABIN\*

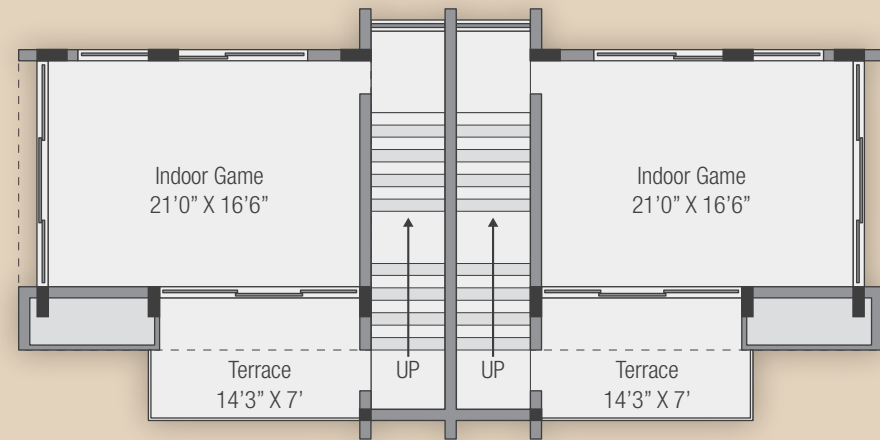
\*COMMON FOR  
ALTOSA AMPLE & ALTOSA UTSAV

CLUB HOUSE

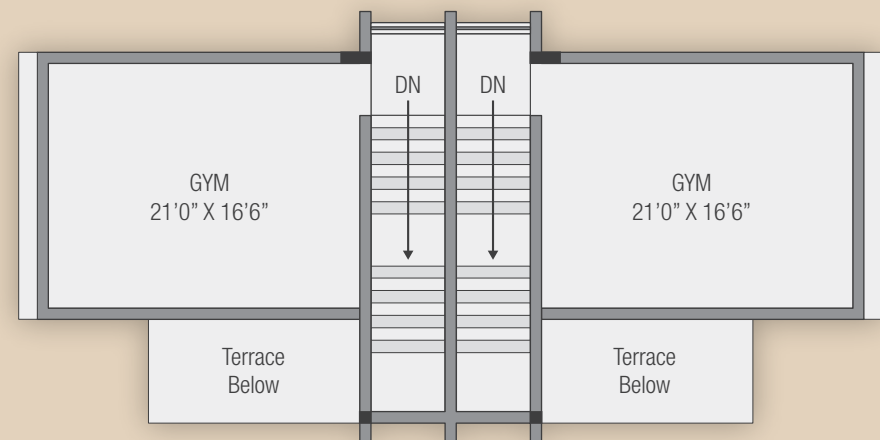
જલસા ઘર



GROUND FLOOR PLAN



FIRST FLOOR PLAN



SECOND FLOOR PLAN



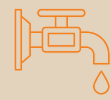
## ALTOSA AMPLE SPECIFICATIONS



**FLOORING**  
32" x 32" vitrified tiles



**KITCHEN**  
Granite platform with standard S.S. sink



**PLUMBING**  
Standard CPVC & UPVC for hot & cold water supply & PVC pipe for drainage system



**ELECTRICALS**  
Standard fire retardant copper wiring with modular switches and safety gears



**SANITARYWARE & BATH FITTINGS**  
Standard sanitary and bath fittings



**WINDOWS FEATURES**  
Standard aluminium powder coated state-of-the-art section windows with child safety grill and provision of track for insect net



**DOOR**  
Laminated main door. Interior doors are without laminate



**WASHING AREA**  
Separate platform with standard S.S. sink and provision for washing machine and geyser



**PAINT**  
Cement putty finish on all internal walls and textured plastic with acrylic paint for external walls



**WATER METER**  
Provision of water meter in each flat



**SOLAR WATER HEATER**  
Common solar water heater for each tower



**LIFTS**  
Auto door lifts



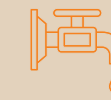
## ALTOSA UTSAV SPECIFICATIONS



**FLOORING**  
24" x 24" vitrified tiles



**KITCHEN**  
Granite platform with standard S.S. sink



**PLUMBING**  
Standard CPVC & UPVC for hot & cold water supply & PVC pipe for drainage system



**ELECTRICALS**  
Standard fire retardant copper wiring with modular switches and safety gears



**SANITARYWARE & BATH FITTINGS**  
Standard sanitary and bath fittings



**WINDOWS FEATURES**  
Standard aluminium powder coated state-of-the-art section windows with child safety grill and provision of track for insect net



**DOOR**  
Laminated main door. Interior doors are without laminate



**WASHING AREA**  
Provision for washing machine and geyser



**PAINT**  
Cement putty finish on all internal walls and textured plastic with acrylic paint for external walls



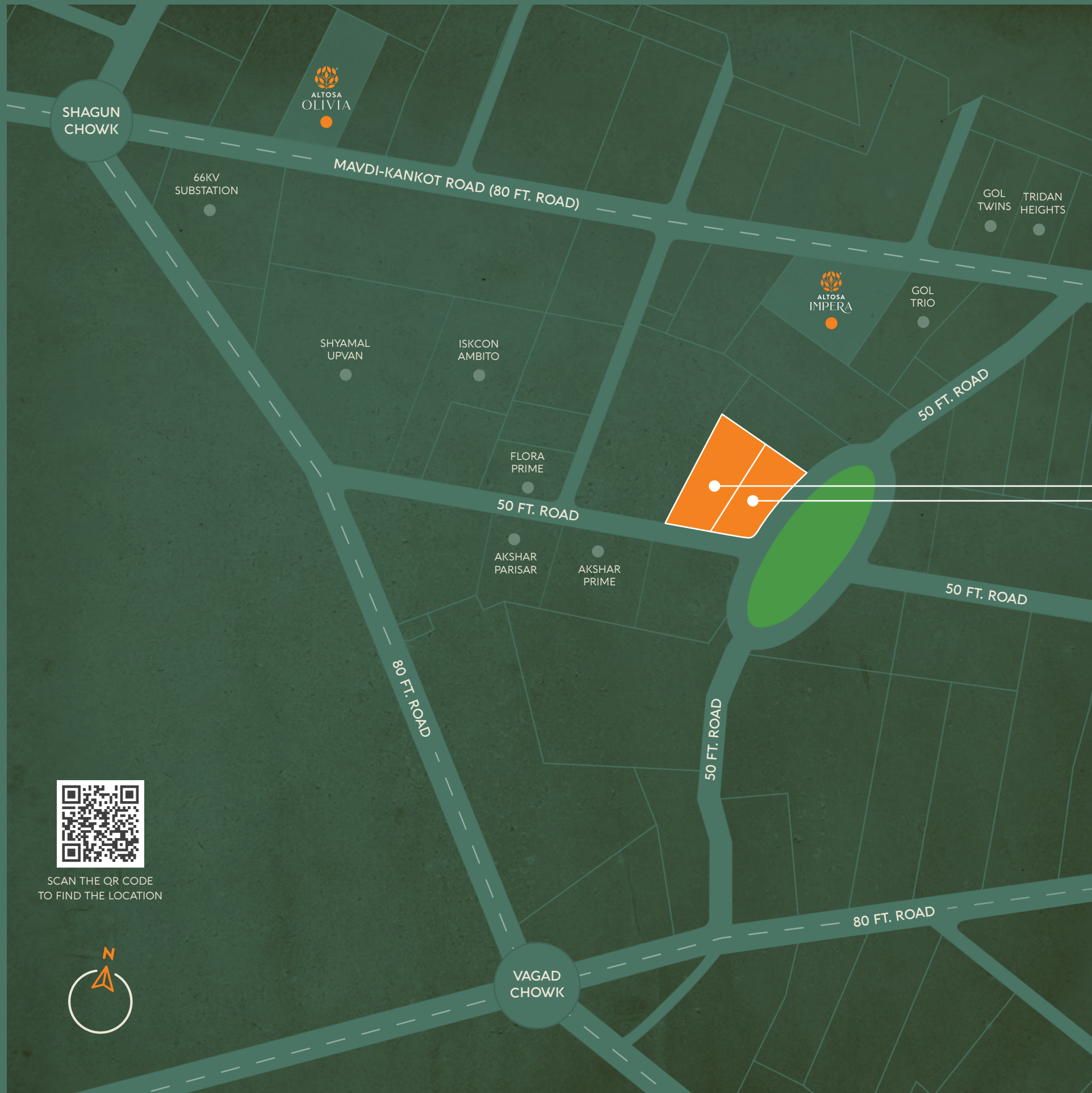
**WATER METER**  
Provision of water meter in each flat



**SOLAR WATER HEATER**  
Common solar water heater for each tower



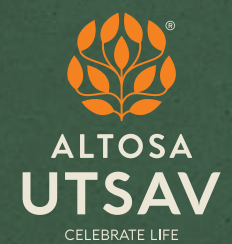
**LIFTS**  
Auto door lifts



SCAN THE QR CODE  
TO FIND THE LOCATION



**3BHK FLATS  
& SHOPS**



**2BHK FLATS  
& SHOPS**

**SITE ADDRESS**

Behind Shyamal Upvan & Iskcon Ambito,  
Opp. Akshar Prime, Mavdi, Rajkot.

**ON-SITE TEAM**

Hasmukh Ukani • Vinod Nayakpara • Girish Kansagra

**98 25 77 23 23    99 7 99 63 63 4**

Time: 10:00 AM to 07:00 PM

|                  |                  |                  |
|------------------|------------------|------------------|
| Bharat Dadhaniya | Dipak Vachhani   | Rajni Kalariya   |
| Vicky Arvadia    | Sagar Sorathiya  | Praful Jasani    |
| Sanjay Sakariya  | Kevin Pipaliya   | Pintu Hingrajiya |
| Nayan Kalariya   | Suresh Dekivadia |                  |

**A PROJECT BY**



**VISIT US AT**  
www.altosagroup.in

**CONNECT WITH US**  
Facebook, Instagram, YouTube icons

**Disclaimer**

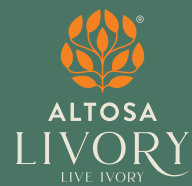
- Dimensions are indicative and subject to change.
- Developers reserve the rights to amend plans, specifications, elevations or any other details as may be deemed fit in the interest of the project.
- Stamp duty and registration charges would be charged extra.
- GST and any such additional taxes would be charged extra.
- Maintenance deposit would be charged extra.
- Gas, PGVCL, first house tax, underground drainage and water connection charges would be extra.
- Internal and external changes would not be permitted.
- Useable carpet is for presentation only and the actual carpet area may vary.
- This brochure is for information purposes only and doesn't form a part of the agreement or any legal document.



SCAN QR CODE TO  
DOWNLOAD THE BROCHURE



## OUR OTHER ONGOING PROJECTS



### 4BHK FLATS

Nr. Masoom School,  
MOTAMAVA, Rajkot

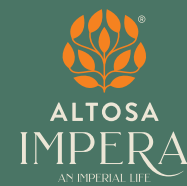
☎ 98 25 77 23 23



### 3BHK FLATS & SHOPS

Opp. 66KV Substation,  
MAVDI, Rajkot

☎ 99 7 99 63 63 3



### 3BHK FLATS & SHOPS

80 Feet Mavdi-Kankot Road Touch,  
Nr. Altosa Olivia, MAVDI, Rajkot

☎ 89 7 89 15 7 15



SCAN QR CODE TO DOWNLOAD THE BROCHURE